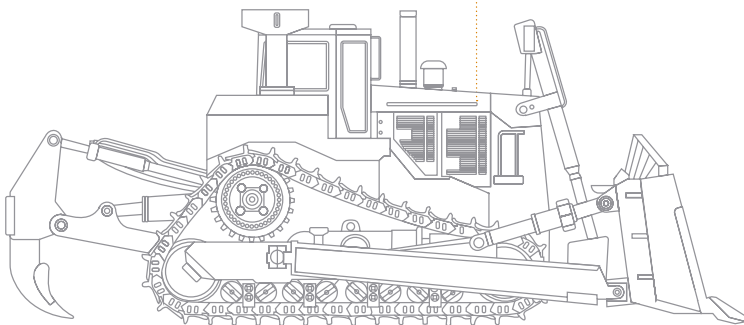
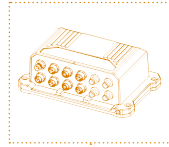


AKKI4-RT

Robust GNSS Receiver



Features

- Compact size
- Integrated CAN converters
- Integrated wifi access point and two ethernet ports
- Fully integrated UHF radio
- GNSS best in-class RTK
- Sturdy aluminium housing
- Galvanic isolation between CAN ports and power supply
- Seamless compatibility with other MGB-TECH products

Made to endure

MGB-TECH's **robust GNSS receiver** is **powered by best-in-class RTK performance**, providing the precision and reliability required in demanding environments.

Housed in a **compact, rugged enclosure**, it delivers a **high level of integration for advanced machine guidance with full compatibility with other MGB-TECH products**. Featuring **galvanic isolation** for interference-free communication, **integrated WiFi, dual Ethernet ports and a UHF radio**, it combines **best-in-class RTK performance**.



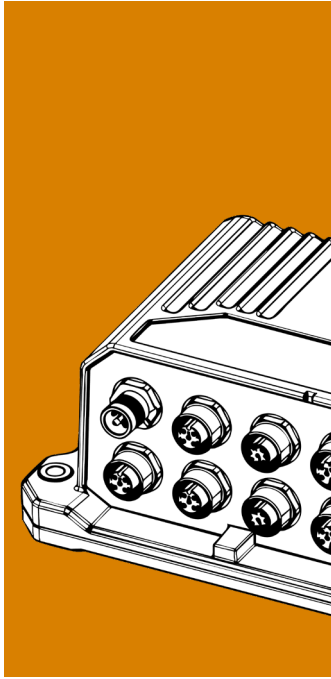
Order information

For additional questions, please contact one of our sales representatives. You can reach us through info@mgb-tech.com, visit our website by scanning the QR code or go to www.pos.mgb-tech.com/gnss-equipment to fill out a product request form.

MGB-TECH

Sint-Ursmarusstraat 180, 9200 Baasrode, Belgium
+32 52 37 59 60

TECHNICAL DATA



ADVANCED GNSS

Our dual antenna handling receiver provides an all-in-view satellite tracking with best in class RTK positioning technology. This device combines best performance with advanced anti-jamming and anti-spoofing technology at a high update rate.

GALVANIC ISOLATION

The integrated power supply and CAN ports have a galvanic isolation barrier to prevent ground loops on the machine. This security ensures that you can operate in the most challenging environments.

CAN CONVERTER

Three integrated CAN ports enables you to stream sensor data to your application and read out machine or engine parameters. Every CAN port has 24V power delivered from the AKKI4 unit with dedicated over current protection and CAN termination.

INTEGRATED UHF & 4G ACCESS POINT

An integrated wide-band UHF radio can be fully configured, enabling operation on local base stations. The integrated 4G modem provides reliable internet connectivity in demanding conditions. Internet can be shared to your application through Wifi or over the available ethernet ports.

COMMUNICATION & INTERFACE		MECHANICAL & CERTIFICATION*	
GNSS	<ul style="list-style-type: none"> Dual antenna heading receiver 100Hz update rate GPS/GLONASS/GALILEO/BEIDOU 	Bottom connection	<ul style="list-style-type: none"> 1 x TNC GNSS MAIN 1 x TNC GNSS AUX 1 x TNC UHF 1 X TNC 4G 1 x M12 T-code 3P male POWER 3 x M12 A-code 5P female CAN 2 x M12 A-code 8P female SERIAL 2 x M12 D-code 4 female ETHERNET
CAN	<ul style="list-style-type: none"> Internal stabilized 24V galvanic isolated power supply 	Top connection	<ul style="list-style-type: none"> 1 x TNC WIFI
Ethernet	<ul style="list-style-type: none"> 10/100 Mb/s auto-MDI-X 	Material Housing	<ul style="list-style-type: none"> Aluminium AlSi12Cu1 - EN AC47100
Mobile	<ul style="list-style-type: none"> LTE B1, B3, B7, B8, B20, B28 UMTS (DC-HSPA+, HSPA+, HSPA, WCDMA) B1, B8 GSM/GPRS/EDGE E-GSM 900, DCS 	Mounting Style	<ul style="list-style-type: none"> Bolt-on
Wifi	<ul style="list-style-type: none"> 802.11b/g/n 2.4 GHz 	Dimensions (L x W x H)	<ul style="list-style-type: none"> 200 x 124 x 69.5 mm
ELECTRICAL SPECIFICATIONS		Weight	<ul style="list-style-type: none"> Approx 1.4 Kg
Power Supply	<ul style="list-style-type: none"> 10-30 VDC (12V & 24V nominal) 	Certifications	<ul style="list-style-type: none"> CE, ROHS, WEEE
Overvoltage protection	<ul style="list-style-type: none"> 101V 10ms ISO16750-2 	<p>*While this product is designed and internally tested to meet the essential requirements of applicable EU directives and global standards, it may not carry official third-party certifications or conformity markings unless otherwise specified on the product or accompanying documentation.</p>	
Reverse polarity protection of the supply voltage (Y/N)	<ul style="list-style-type: none"> Yes 		
ENVIRONMENTAL*		** Ibid	
Operating temperature	<ul style="list-style-type: none"> -40°C to +70°C 		
Storage temperature	<ul style="list-style-type: none"> -40°C to 85°C 		
IP rating	<ul style="list-style-type: none"> IP67 ISO20653 		
Vibration	<ul style="list-style-type: none"> 10-500Hz +12mm IEC 60068-2-6 		
Shock	<ul style="list-style-type: none"> 50g IEC60068-2-27 		